



Shropshire
Council



Newsletter February 2011



Your guide to what's going on with
Shrewsbury's cycling town campaign
and Connect2

www.cycleshrewsbury.co.uk



Win a year's family membership of the National Trust!

This month we have an extra special exclusive members' competition to celebrate the new year! Cycle Shrewsbury members have the chance to win a year's National Trust membership for a family of up to four people worth up to £88.50!

For your chance to win simply go to:

www.cycleshrewsbury.co.uk/members/competitions and tell us what food you take with you when you cycle.

The closing date for entries is **27 February 2011**.

If you're not yet a Cycle Shrewsbury member sign up for free at:

www.cycleshrewsbury.co.uk/join/register-online for your chance to enter this and other brilliant competitions.

New wildlife cycle ride leaflet

Look out for a new leaflet in our family friendly ride series.

'Wildlife and Waterways' is a seven mile cycle route discovering some of Shrewsbury's hidden waterways and great places to spot wildlife.

The leaflet will be launched during the Darwin Festival 12-26 February and available to download from the Cycle Shrewsbury website soon afterwards.

All our leaflets can be downloaded at www.cycleshrewsbury.co.uk/cycle-routes

Contra flow cycling on one-way streets

We're currently reviewing feedback on the consultation about contra flow cycling. It's generated a lot of interest with over 40 comments. As well as lots of support, there have been some concerns raised by local residents. The comments will be reviewed during February and discussed with local councillors before proceeding further with this project. If you would like to find out more about the proposals, please see:

www.cycleshrewsbury.co.uk/about/have-your-say/contra-flow-cycling-on-one-way-streets

Wrexham and Shropshire railway

Sadly, on 28 January 2011 Wrexham and Shropshire Railway ceased trading.

Arriva and London Midland continue to run services out of Shrewsbury, but their trains have less capacity for bikes.

www.cycleshrewsbury.co.uk/tips-and-advice/trains-and-bicycles

Blazing Bikes added to members' discount card scheme

Cycle Shrewsbury members can now use their discount card at Blazing Bikes - the online store for the Shropshire Hills Mountain Bike and Outdoor Pursuit Centre. The centre is situated in Marshbrook near Church Stretton.

Visit www.blazingbikes.co.uk to see what you could use your discount card for, or contact the shop on 01694 781515 to make a purchase using your discount card.

If you're not yet a Cycle Shrewsbury member sign up for free at: www.cycleshrewsbury.co.uk/join/register-online to get your discount card.

Evaluation of the Cycling City and Towns programme

The Department for Transport and Cycling England have just published the interim evaluation report for the Cycling City and Towns programme. For a good overview of background data and recent progress across all the cycling towns, please visit:

www.dft.gov.uk/cyclingengland/cycling-cities-towns/monitoring-and-evaluation-of-the-cycling-city-and-towns-programme

www.cycleshrewsbury.co.uk



Tri-cycling at half term - 21–23 February 2011



Booking is now open for our half term tri-cycling course: three days of BMX, mountain biking and on-road cycle training for anyone in Year 5 or above.

The last course was very popular: one parent said, "Thanks for such an excellent half-term cycling course. My son has had an amazing time and has learnt so much from it."



The cost is £25 for the three days; or £10 for the second or third child in a family. It's free if you get free school meals.

Or you can enter our competition to win a free place!

The course takes place at Meole Brace School and Shrewsbury Sports Village.

Bicycles will be available to borrow.

Download the booking form and get more information here:
www.cycleshrewsbury.co.uk/news-and-events/diary/details/95_Tri_cycling_at_half_term

Cycle safely and considerately

The Cycle Shrewsbury team is working with the police as part of a new initiative to clear up confusion over the law, and encourage more people to cycle safely and considerately.

The police and Shrewsbury Town Council's town warden are stopping people who cycle on the pavement in Shrewsbury, and handing out a new leaflet which explains the law on where you can cycle. The leaflet also makes clear that on shared-use paths cyclists should show consideration to other path users.

At the same time Cycle Shrewsbury is offering free cycle training to adults who aren't confident about cycling in traffic.

The leaflet will help the police to give advice to cyclists who are confused about the law, or nervous of traffic. Those who continue to break the law even after a warning can expect a fixed penalty notice of £30.

Confused about where you are allowed to cycle? Visit:
www.cycleshrewsbury.co.uk/tips-and-advice/road-signs-and-markings

Free cycle training

Last chance to take advantage of this offer before the end of March 2011.

Cycle Shrewsbury is currently offering up to three free one-hour sessions for adults.

Courses are available for anyone of any age and level of experience, including adult beginners. Courses can be held for groups or one-to-one, in a variety of settings including family groups, workplaces or community groups.

Details are available at:
www.cycleshrewsbury.co.uk/bike-services/cycle-training
or call 01743 255435.

www.cycleshrewsbury.co.uk



Cycle parking

Over 140 new cycle parking spaces have been provided at public venues in the last six months. The Cycle Shrewsbury team has been working with community groups and other organisations to provide cycle parking at sites including local GP surgeries, church halls, community centres and corner shops.

At Shrewsbury Railway Station, Arriva Trains Wales has installed 17 cycle stands which were purchased by Cycle Shrewsbury. Existing cycle parking is being repainted, after 10 years of regular use. Recent surveys have shown that more and more people are combining cycling and train journeys.

Most of the cycle parking is in the form of stainless steel 'Sheffield stands' which are consistently voted as the most secure and robust type of cycle stand. However, a pilot scheme at Theatre Severn has also seen the introduction of 'plant locks' which combine cycle parking with floral displays.



In addition to the community cycle parking programme, Cycle Shrewsbury has recently helped to provide new cycle shelters at the following schools and workplaces:

- Harlescott Junior School
- Crowmoor Primary School
- St Georges Junior School
- Hachers Solicitors, Battlefield
- Morris Lubricants, Castlefields
- New Zealand House, Abbey Foregate
- Radbrook Green Surgery

If you have suggestions for other places where you would like to park your bike, please let us know or record it on the mapping website: www.parkthatbike.info.

Mytton Oak Road - new toucan crossing

Work started on 10 January to build a new signal controlled crossing (toucan crossing) near the Royal Shrewsbury Hospital.

As well as improving connections for people travelling to work and visiting the hospital, the new crossing will also help children and local residents. It will link with a



new shared used path to Falcons Way and work should be completed by the end of February.

Heathgates Island

Work has just been completed on the Ditherington Road arm of the Heathgates roundabout.



Although this is a difficult crossing point between Telford Way and Whitchurch Road, the wider refuges and green surfacing will provide more space for cyclists and pedestrians, and highlight the crossing point to drivers.



LTP expenditure priorities consultation

Shropshire Council is preparing the third Local Transport Plan. The plan will outline the council's transport strategy and objectives for 15 years from April 2011 and will also include a detailed three year action plan.

We want your opinions on priorities for transport expenditure over the coming years. Let us know what you think by completing our online survey by the end of February:

www.shropshire.gov.uk/traveltransport.nsf/open/2A79133CD32676E98025709E002EEF2B

Cycle Shrewsbury: the future

The government has recently announced a new Local Sustainable Transport Fund (LSTF) covering the period 2011-15. Local authorities (and partners) have been invited to put forward packages of sustainable transport measures that contribute to local economic growth and tackle climate change.

There will be no separate funding for Cycle Shrewsbury and the other cycling towns after 31 March 2011. The LSTF could be a good opportunity to obtain funding to extend the work of Cycle Shrewsbury to other parts of the county and/or other possible target groups, as well as continuing with some of the successful current work.

The Cycle Shrewsbury team will be working with Shropshire Council colleagues and partners to prepare a bid to the LSTF over the next two or three months, which will include promotion of cycling and walking as well as other sustainable transport measures.

If you have any suggestions, please email: cycle.shrewsbury@shropshire.gov.uk.

Connect2 bench

You may remember that our last members' competition asked for ideas for local people to be featured on a new bench which will be built on the riverside as part of Shrewsbury's Connect2 scheme.

In the next couple of months we'll be asking the wider public to vote on their favourite from the suggestions we've received, so that we are able to select the top three.

If you have any ideas for people who should be included email them to cycle.shrewsbury@shropshire.gov.uk.

Schools Bike It update

Bike It officer, Kim Williams, has been very busy over the winter. She has signed up to work with another school, Crowmoor Primary School.

The Big Pedal

Sustrans' virtual bike race takes place 7-25 March 2011. This year it's open to all schools, with some great prizes! Kim will be organising events with Bike It schools throughout the Big Pedal. More information:

www.thebigpedal.org.uk

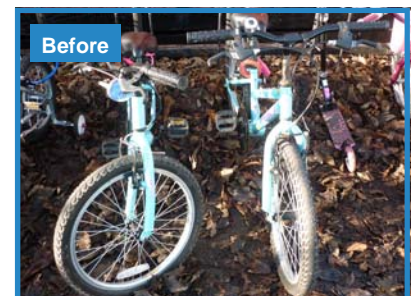


Greenfields walk and cycle to school day

This was initiated by the local policing team in consultation with Kim and our school travel plan team, and aimed to reduce traffic outside the school at the start and end of the day. On 19 January 2011 there were 100 bikes and scooters at the school! There were bike checks and police security marking, plus Kim's Bike It crew cleaned the cycle storage area prior to the day (see before and after pictures!).

For a full update on what's going on in Bike It schools visit:

www.cycleshrewsbury.co.uk/kids/schools-bikeit/whats-happening-at-your-school



www.cycleshrewsbury.co.uk

Dates for your diary

6 February 2011 - Women on wheels social ride

10.30am Porthill Bridge.

12 February 2011 - STFC match day ride

1.30pm from Mount Pleasant School

21 - 23 February 2011 - Tri-cycling at half-term

3 day cycling course for children in year 5 and above

26 February 2011 - STFC match day ride

Start point to be confirmed

2 March 2011 - Shropshire Cycle Forum

7pm Shirehall, Abbey Foregate, Shrewsbury.

6 March 2011 - Women on wheels social ride

10.30am Porthill Bridge.

7-25 March 2011 - The Big Pedal

www.thebigpedal.org.uk

19 March 2011 - STFC match day ride

Start point to be confirmed

21-25 March 2011 - Bike to school week

27 March 2011 - Severn Hospice Daffodil Ride

For more details of these and other events visit:

www.cycleshrewsbury.co.uk/news-and-events/diary

Featured event: Daffodil Ride

Charity cycle ride in aid of Severn Hospice, Sunday 27 March 2011

Severn Hospice has been caring for patients from across Shropshire and mid- Wales for over 21 years. With sites in Shrewsbury, Telford and Newtown, Severn Hospice offers a wide variety of services for those suffering from life limiting illnesses and their loved ones.



The Bicycle Hub, Shropshire Council and Sustrans have teamed up with Severn Hospice to organise the second annual Daffodil Ride on Sunday 27 March.

This takes place on the newly opened traffic-free disused railway track between Bridgnorth and Coalport.

For more information about this event please contact:

Appeals, Severn Hospice, Bicton, Shrewsbury, SY3 8HS

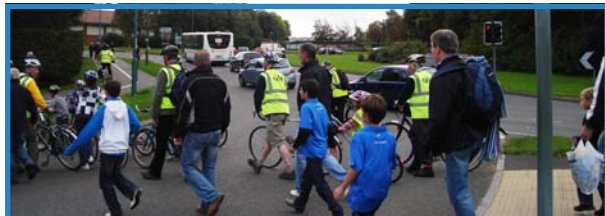
or appeals@severnospice.org.uk.

Alternatively please call 01743 354 450 or 01952 221 351.

www.severnospice.org.uk/events/daffodil-ride-2011

Match day rides

Following our first ride during 'love your bike month' in October, match day



rides to Shrewsbury Town FC home games on Saturdays have continued. The rides during 2011 start from different schools across Shrewsbury.

Anyone can join the rides but under 16's must be accompanied by an adult. The ride is free and participants get reduced entry prices to the game: adults pay £8 and under 16s only £1.

Upcoming rides:

- 12 February v Stevenage from Mount Pleasant School.
- 26 February v Gillingham. Start point TBC.
- 19 March v High Wycombe. Start point TBC.

www.cycleshrewsbury.co.uk/news-and-events/diary/stfc-match-day-rides

Contact Cycle Shrewsbury

Alison Kennedy - Infrastructure Manager.
01743 253035
alison.kennedy@shropshire.gov.uk

Emma Bullard - Promotions Manager.
01743 255435
emma.bullard@shropshire.gov.uk

Kim Williams - Bike It Officer.
07780 002817 or 01743 255437
kim.williams@sustrans.org.uk

Richard Stephens - Cycling Coach.
07866 924300
richardcyclingcoach@yahoo.co.uk

General enquiries:

01743 253008

www.cycleshrewsbury.co.uk

cycle.shrewsbury@shropshire.gov.uk

Twitter: @cycleshrewsbury

www.cycleshrewsbury.co.uk