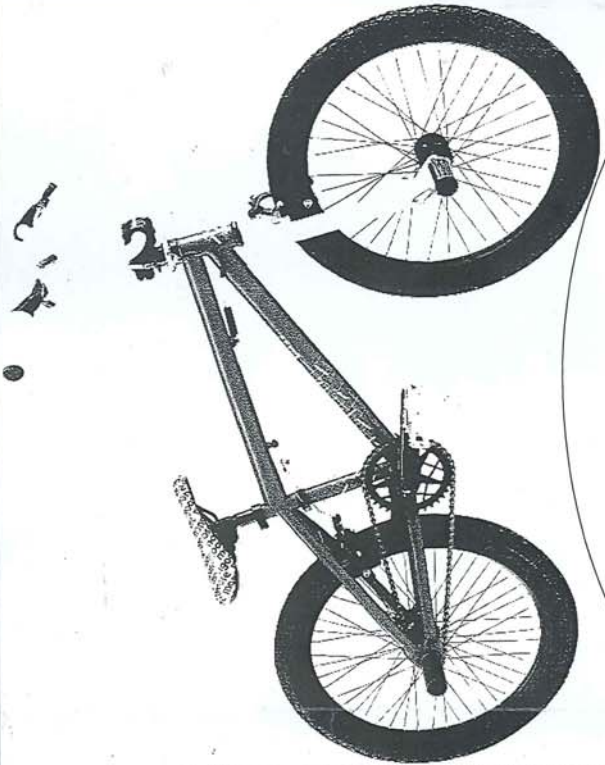
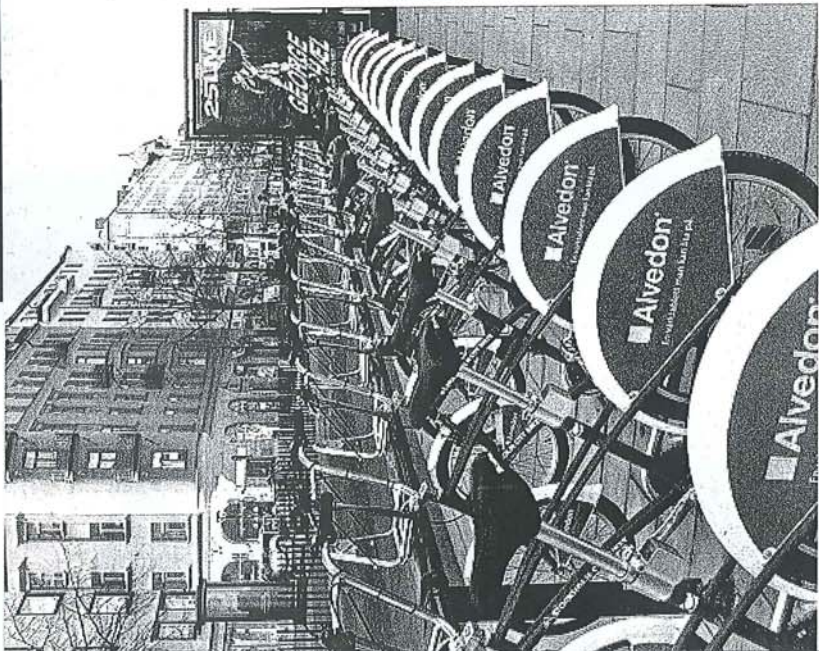


DEAR KIM I HAVE  
 ANOTHER IDEA WHY  
 DONT WE ALL BRING R  
 BIKES TO SCHOOL AND  
 PUT THEM END 2 END  
 & SE HOW LONG THAY  
 STRECH!



161 metres of bikes !!!



This Friday we are lining up all the bikes brought in by pupils to see how far we can stretch them across the playground anyone who could bring in their bikes will also help push us along our virtual bike race thank you